

DN 24-32

DREDGING NOTICE  
U.S. ARMY CORPS OF ENGINEERS  
ST. PAUL DISTRICT

NOTICE DATE: October 2 <sup>nd</sup> , 2024	DREDGING CATEGORY: Imminent
MEETING DATE: If requested	MEETING TIME:
BOAT REQUIREMENT:	MEETING LOCATION:
<hr/>	
DREDGE CUT NAME: St. Paul Barge Terminal	RIVER MILE: 837.0 – 837.6

HISTORIC DATA

Frequency: 47%	Avg. Quantity/Job: 91,161 yd <sup>3</sup>
Date Last Dredged: August 15 <sup>th</sup> , 2023	Avg. Quantity/Year: 43,048 yd <sup>3</sup>

SURVEY DATA

Date Surveyed: September 26<sup>th</sup>, 2024  
Water Surface Elevation: 686.8  
Low Control Pool Elevation: 686.8  
Net Difference: + 0.0'  
5-Day River Forecast: Holding flat at LCP

DREDGING DATA

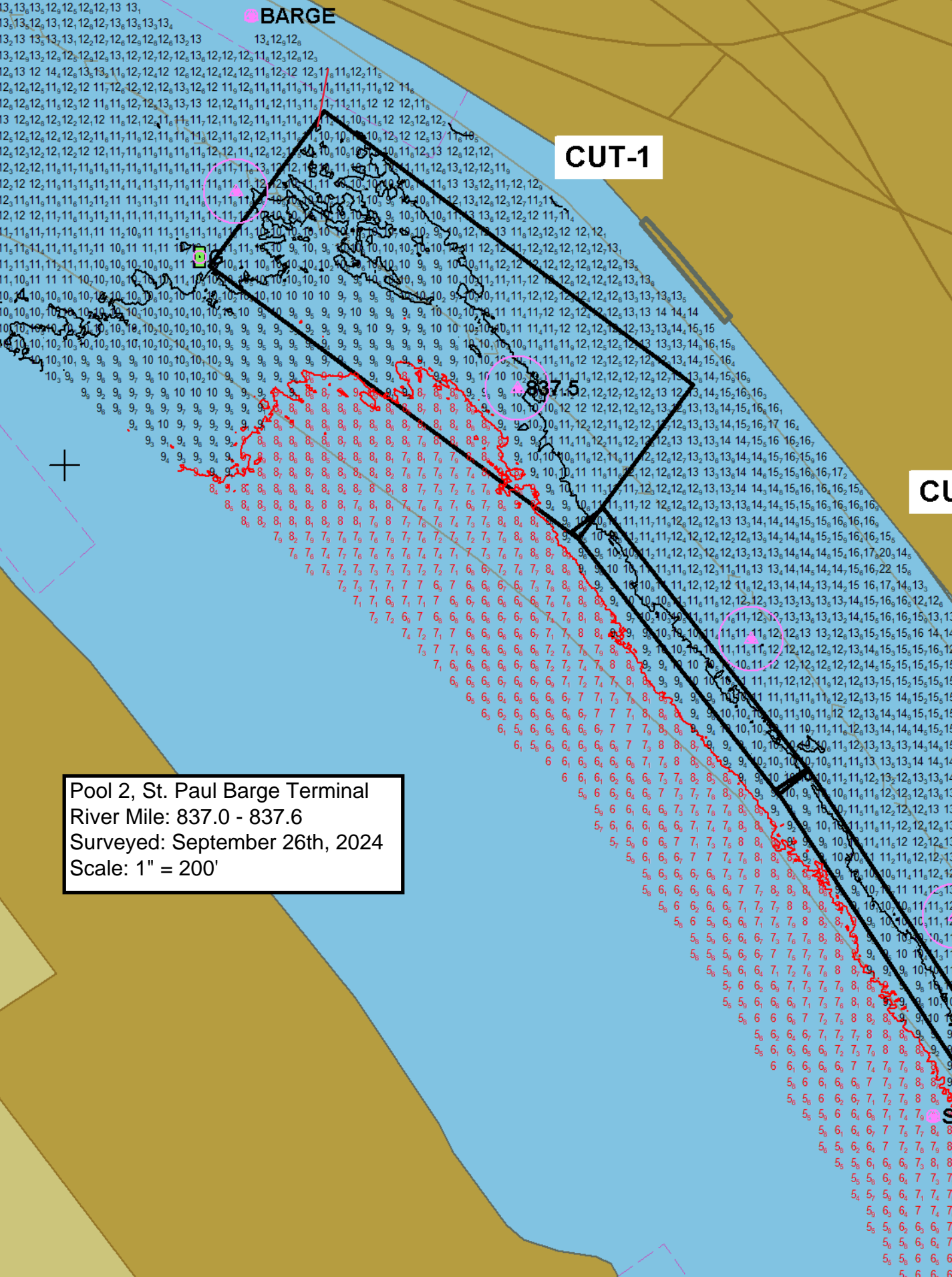
Recommended Channel Width: 300  
Recommended Dredging Depth: 12 feet  
Estimated Quantity: 23,958 yd<sup>3</sup>  
Type of Dredge: Contract Mechanical Plant 2  
Proposed Dredging Date: October 2<sup>nd</sup>, 2024  
Estimated Duration: 12 dredging days  
Justification for Dredging: Channel is reduced to 325 feet between the 9.0' contours and 110 feet between the 10.5' contours.

MATERIAL PLACEMENT DATA

Proposed Placement Site: Southport  
Location: 2-836.3-RMP  
Site Characteristics: This is a historically used beneficial use site.

If you have any questions concerning this project, or if you would like to request an on-site meeting, please call me at (651) 350-2564.

Eric Hammer  
Channel Maintenance Coordinator



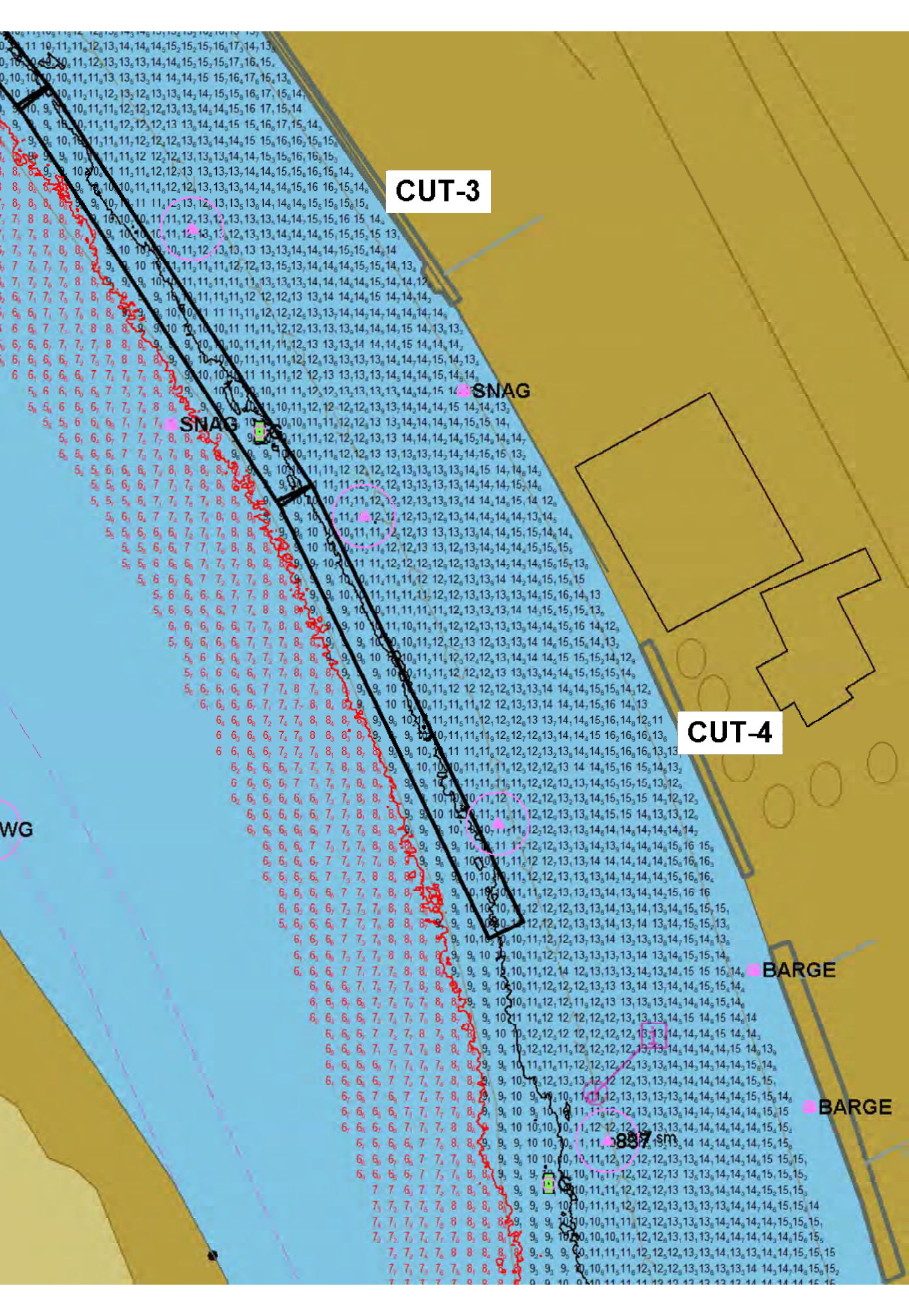
BARGE

CUT-1

CUT-2

Pool 2, St. Paul Barge Terminal  
River Mile: 837.0 - 837.6  
Surveyed: September 26th, 2024  
Scale: 1" = 200'





CUT-3

SNAG

SNAG

CUT-4

BARGE

BARGE

837 sq ft

WGW